



REGIONAL SPECIALISED METEOROLOGICAL CENTRE-TROPICAL CYCLONES, NEW DELHI
TROPICAL WEATHER OUTLOOK

DEMS-RSMC TROPICAL CYCLONES NEW DELHI DATED 23.12.2024

TROPICAL WEATHER OUTLOOK FOR THE NORTH INDIAN OCEAN (THE BAY OF BENGAL AND THE ARABIAN SEA) VALID FOR THE NEXT 168 HOURS ISSUED AT 0600 UTC OF 23.12.2024 BASED ON 0300 UTC OF 23.12.2024.

BAY OF BENGAL:

Yesterday's well marked low pressure area over westcentral Bay of Bengal moved west-southwestwards and lay over Westcentral and adjoining Southwest Bay of Bengal off South Andhra Pradesh-North Tamil Nadu coasts at 0000 UTC of today, the 23rd December 2024. Continuing to move further west-southwestwards it lay over Southwest and adjoining westcentral Bay of Bengal off South Andhra Pradesh- North Tamil Nadu coasts at 0300UTC of today, the 23rd December, 2024. The associated cyclonic circulation extended upto 3.1 km above mean sea level. It is likely to move further west-southwestwards and reach southwest Bay of Bengal near north Tamil Nadu & south Andhra Pradesh coasts on 24th December.

The latest satellite imagery indicates low level cyclonic circulation centered near 12.7°N and 84.0°E. Associated Scattered Low/Medium Clouds with embedded moderate to intense convection lay over southwest and central Bay of Bengal between latitude 10.7°N to 15.0°N and longitude 82.0°E to 92.0°E (minimum cloud top temp -40°C to -65°C).

Scattered low and medium clouds with embedded intense to very intense convection lay over south Bay of Bengal (minimum cloud top temperature -69°C). Scattered low and medium clouds with embedded moderate to intense convection lay over central Bay of Bengal (minimum cloud top temperature -70°C to -80°C). Scattered low and medium clouds with embedded moderate to intense convection lay over south Bay of Bengal, south Andaman Sea and weak to moderate convection lay over north Bay of Bengal, north Andaman Sea.

***PROBABILITY OF CYCLOGENESIS (FORMATION OF DEPRESSION) DURING NEXT 168 HRS:**

24 HOURS	24-48 HOURS	48-72 HOURS	72-96 HOURS	96-120 HOURS	120-144 HOURS	144-168 HOURS
NIL	NIL	NIL	NIL	NIL	NIL	NIL

***NOTE: EVERY 24HR FORECAST IS VALID UPTO 0300 UTC (0830 IST) OF NEXT DAY**

ARABIAN SEA:

Scattered low and medium clouds with embedded weak to moderate convection lay over south Arabian sea & Comorin area. Scattered low med clouds over Lakshadweep islands area, Maldives area.

***PROBABILITY OF CYCLOGENESIS (FORMATION OF DEPRESSION) DURING NEXT 168 HRS:**

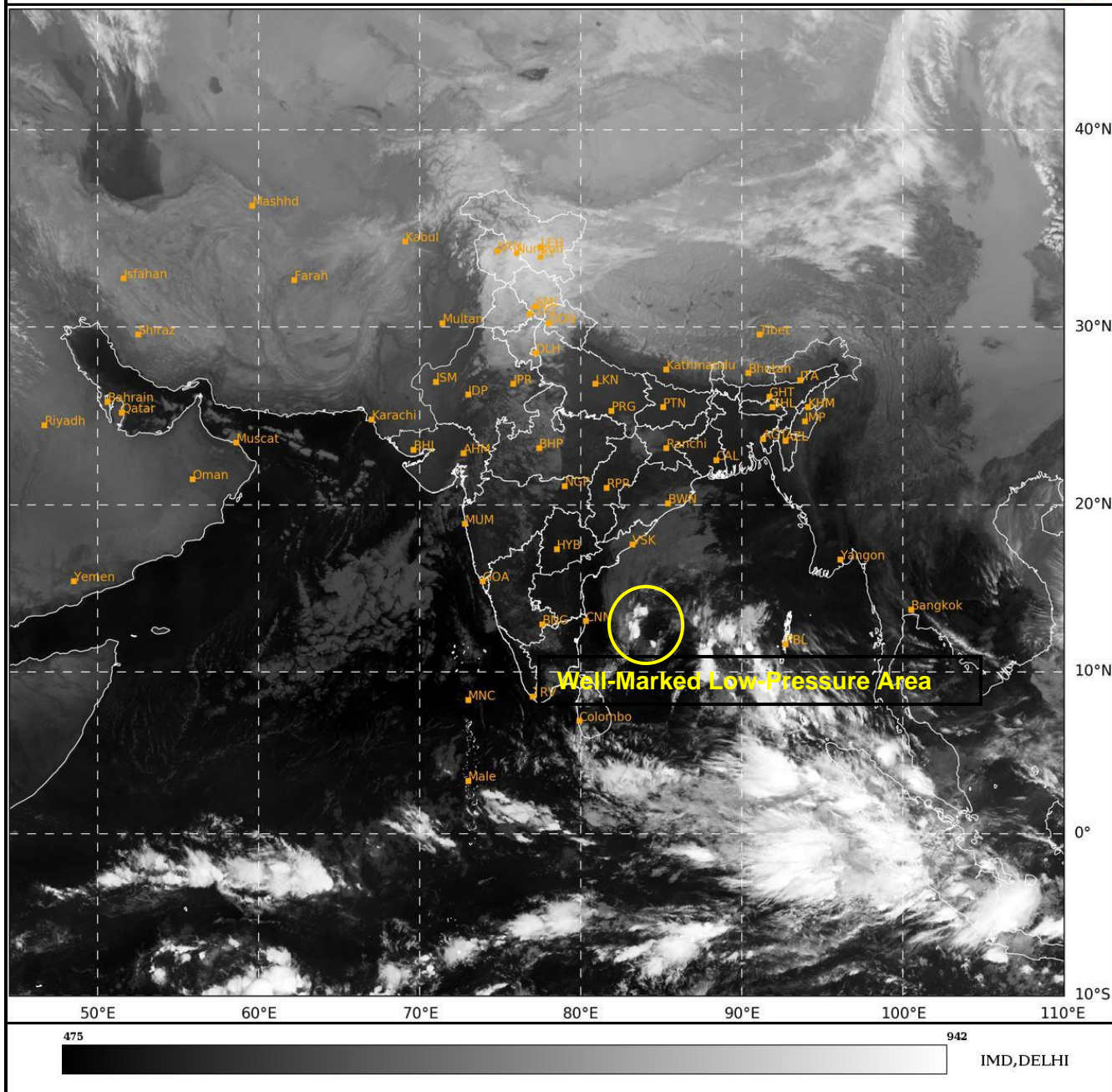
24 HOURS	24-48 HOURS	48-72 HOURS	72-96 HOURS	96-120 HOURS	120-144 HOURS	144-168 HOURS
NIL	NIL	NIL	NIL	NIL	NIL	NIL

***NOTE: EVERY 24HR FORECAST IS VALID UPTO 0300 UTC (0830 IST) OF NEXT DAY**

REMARKS: NIL

SAT : INSAT-3DR IMG
IMG_TIR1 10.8 um
LIC Mercator

23-12-2024/(0245 to 0312) GMT
23-12-2024/(0815 to 0842) IST



Cloud distribution: (a) Isolated: <25%, Scattered:25-50%, Broken: 51-75%, Solid:>75%, Convection Intensity: (a) Weak: Cloud Top Temperature (CTT) >-25°C, (b) Moderate: CTT: - 25°C to -40°C, (c) Intense: CTT: - 41°C to -70°C and (d) Very Intense: : Less than -70°C
PROBABILITY OF CYCLOGENESIS (FORMATION OF DEPRESSION):NIL: 0%, LOW: 1-33%, , MODERATE: 34-66% AND HIGH: 67-100%
This is a guidance Bulletin for WMO/ESCAP Panel Member countries. Visit respective National websites for Country specific Bulletins